

alfresco *living*



Made in **Australia**



CONDOR
RANGEHOODS



all you need for a perfect day

As alfresco areas become more complex, ventilation is becoming one of the most important design considerations.

As barbecues continue to increase in size and complexity, with heat outputs in excess of 110 mega joules, careful planning with regard to correct ventilation is essential.



live on the patio







CONDOR
RANGEHOODS



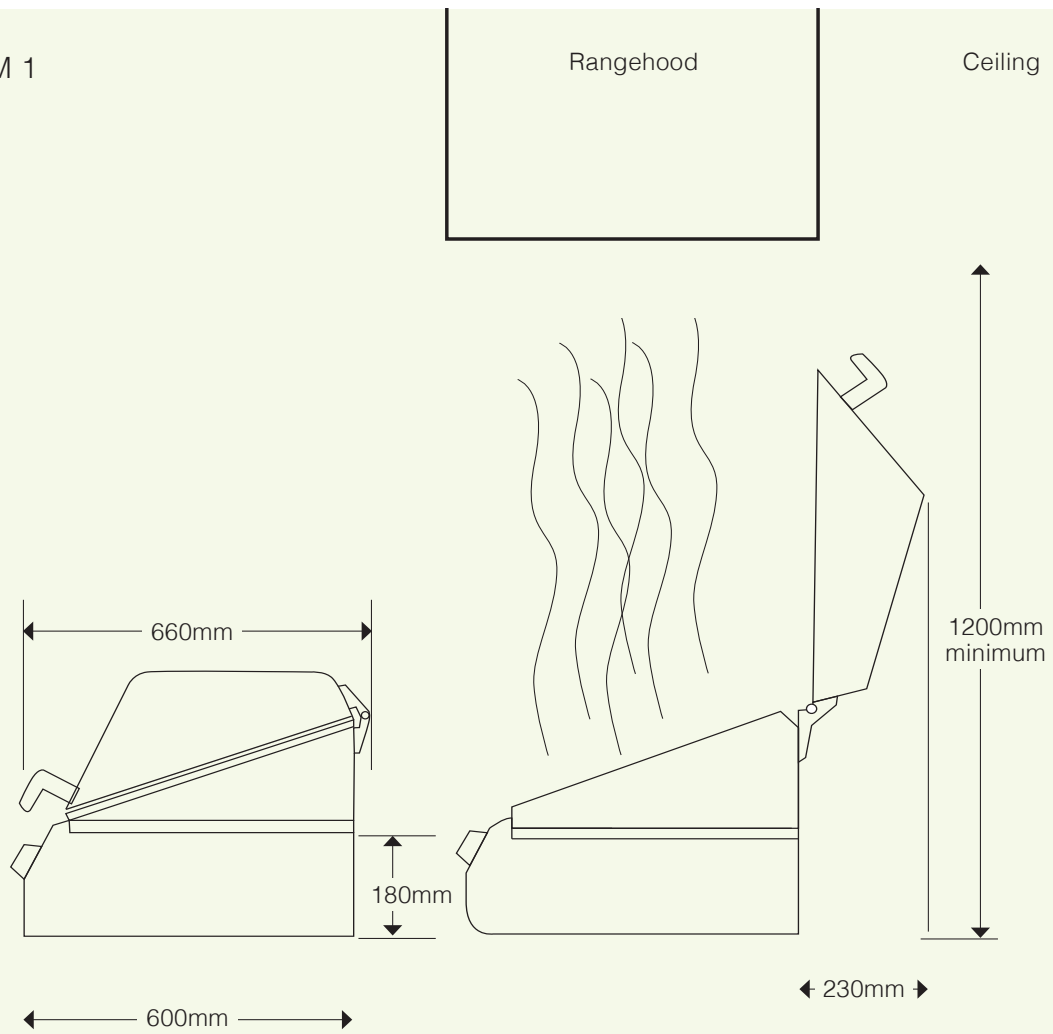
Australian made
and owned

Condor Rangehoods - a solution
for all alfresco areas in Australia.

cook outdoors



DIAGRAM 1

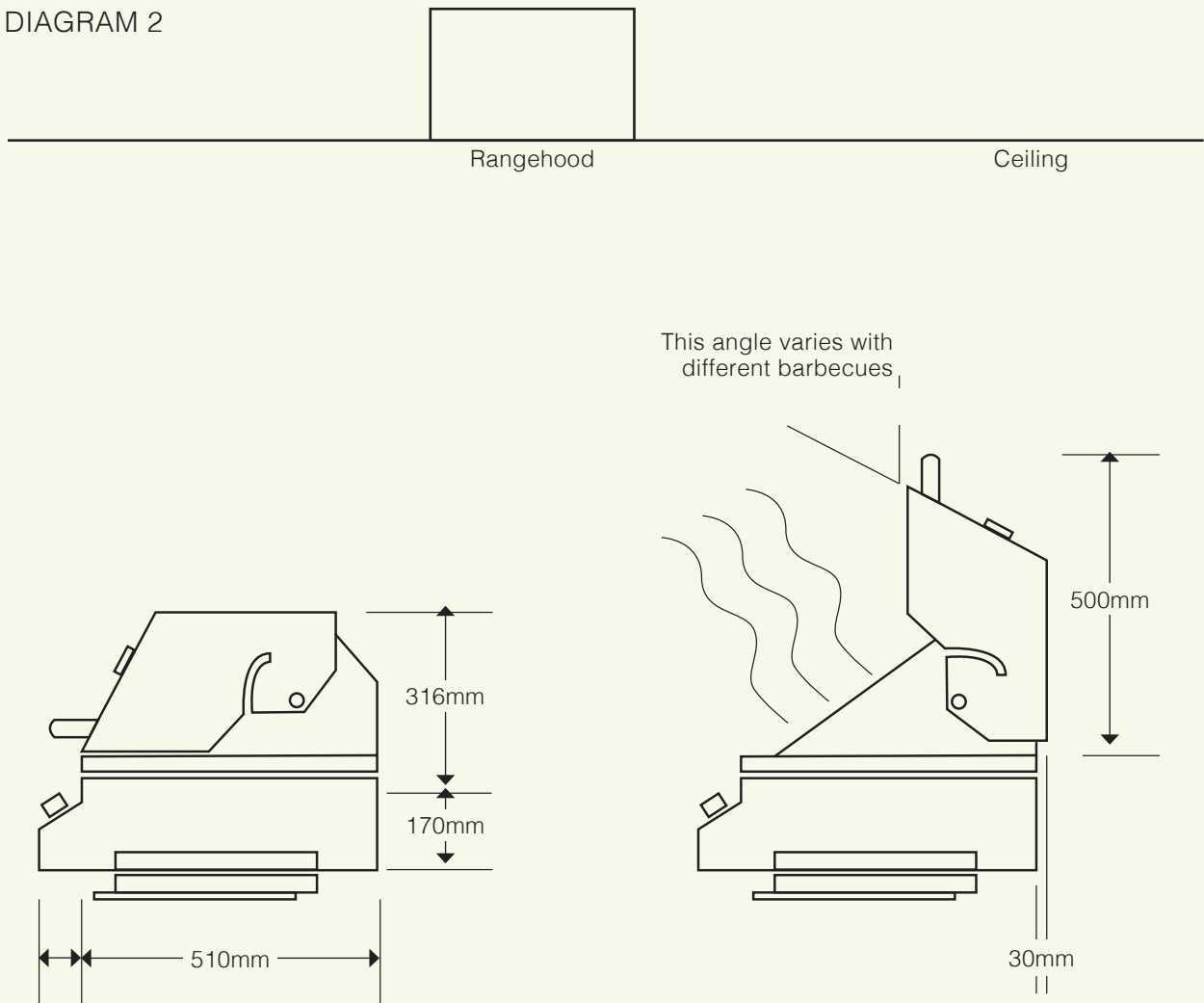


Alfresco areas are becoming more popular and barbecues are becoming more elaborate and complex putting out more heat. The problem with ventilation is when the heat output of the barbecue is over 65 mega joules or each burner is 15 mega joules or greater. Correct ventilation allows full use of all the facilities in the Alfresco areas. The barbecue selected will determine the type of rangehood and the position for the rangehood.

The diagram above shows a barbecue with the hood open at 90 degrees to the cooking surface and the smoke rises vertically. The rangehood can be placed over the top of the cooking surface. Some manufacturers recommend that you cook with the lid closed and the rangehood can be placed above the barbecue.

The diagram shows the relationship of the barbecue to the rangehood.

DIAGRAM 2



The diagram above shows the barbecue lid is pivoted in the centre of the base and therefore covers the back half of the cooking surface. There are many models on the market that are like this and the smoke comes out from the cooking surface at about 60 degrees to the horizontal. The rangehood needs to be in front of the barbecue so it will catch all the by products of the cooking. The position will be determined by the height of the ceiling. This diagram explains the problem and the solution to this.

We recommend an air movement up to 2700 cubic metres per hour over all outdoor barbecues and for diagram 2 it may be necessary to have an air movement up to 3600 cubic metres depending on the ducting required.

All barbecues vary considerably in size and heat output so it is important to ensure the rangehood selected will provide the most satisfactory result over the barbecue selected.

Island and wall mounted barbecues will need to fully cover the hotplate and may need extra air movement to get the right result.



Condor Rangehoods are designed and manufactured in Australia to compliment all alfresco and outdoor areas. The latest design in outdoor entertaining can now become truly viable with the addition of a Condor Rangehood. The Condor Rangehood will remove all by-products of outdoor cooking – smoke, grease and odours.

Many barbecues installed in alfresco areas can be quite elaborate and exotic. They can include different cooking appliances, such as side burners, wok burners and rotisserie spikes, and are available in natural and LP gas. Significantly, they can generate an enormous amount of smoke and odours.

The barbecues available in today's market place can produce an output of up to 130 mega joules. The air movement of the exhaust system must be greater than the updraft caused by the burners of the barbecue. The Condor Rangehood achieves this via 3 forward curved centrifugal fan motors with a maximum air movement of 2700 cubic metres of air per hour. This is matched by an incomparable degree of quietness, which is achieved by fully insulating the rangehood with sound-deadening material.

The following pages have 8 different Condor Rangehoods

- | | |
|--------------|---------------|
| 1. Baltimore | 5. Beechworth |
| 2. Boston | 6. Falcon |
| 3. Eyre | 7. Tanami |
| 4. Austin | 8. Peninsula |

All the Condor Rangehoods have an air movement from 450 cubic metres to 2700 cubic metres per hour except for the Tanami which has a maximum of 3600 cubic metres per hour.

Lights are LED Strip Type and each light is 6.7 watts.

The filters can be washed in a dishwashing machine.

The Condor Rangehoods can be ordered with remote switching and for this the coding has an R after the model – eg. BAL1200L-3R.

If the remote switch option is required, switching will not be supplied as it is necessary to install an approved switch bank.

Condor Rangehoods are now insulated with Megasorber FM acoustic foam utilizing a patented sound absorbing facing material “Soundmesh G8” to provide maximum sound absorption.



MEGASORBER P FIREPROOF ACOUSTIC PANEL

Megasorber P is a sound absorption material consisting of a patented acoustically tuned fireproof sound-absorbing Soundmesh G8 (Australian Patent No. 2009206497). It is fireproof and designed for maximum noise absorption at low to mid frequencies.



CONDOR FILTERS

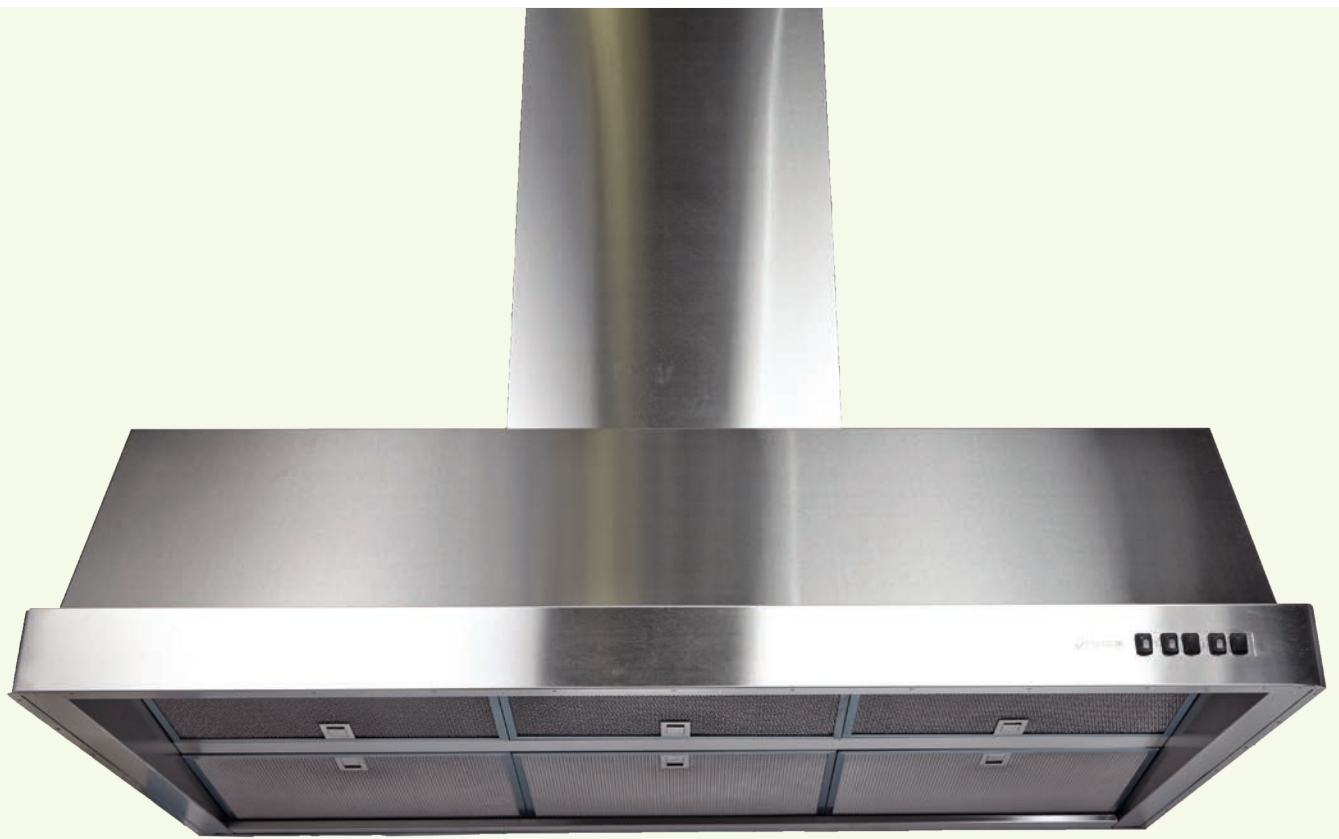
Condor filters have eight layers of metal to capture small and large grease particles. They have a resistance to airflow of 30 Pascals, which dramatically reduces the noise. They are dishwasher-safe.

top and back ducted within
the rangehood



The Condor Rangehoods – Baltimore and Boston come top ducted and can be reversed on site by the installer.

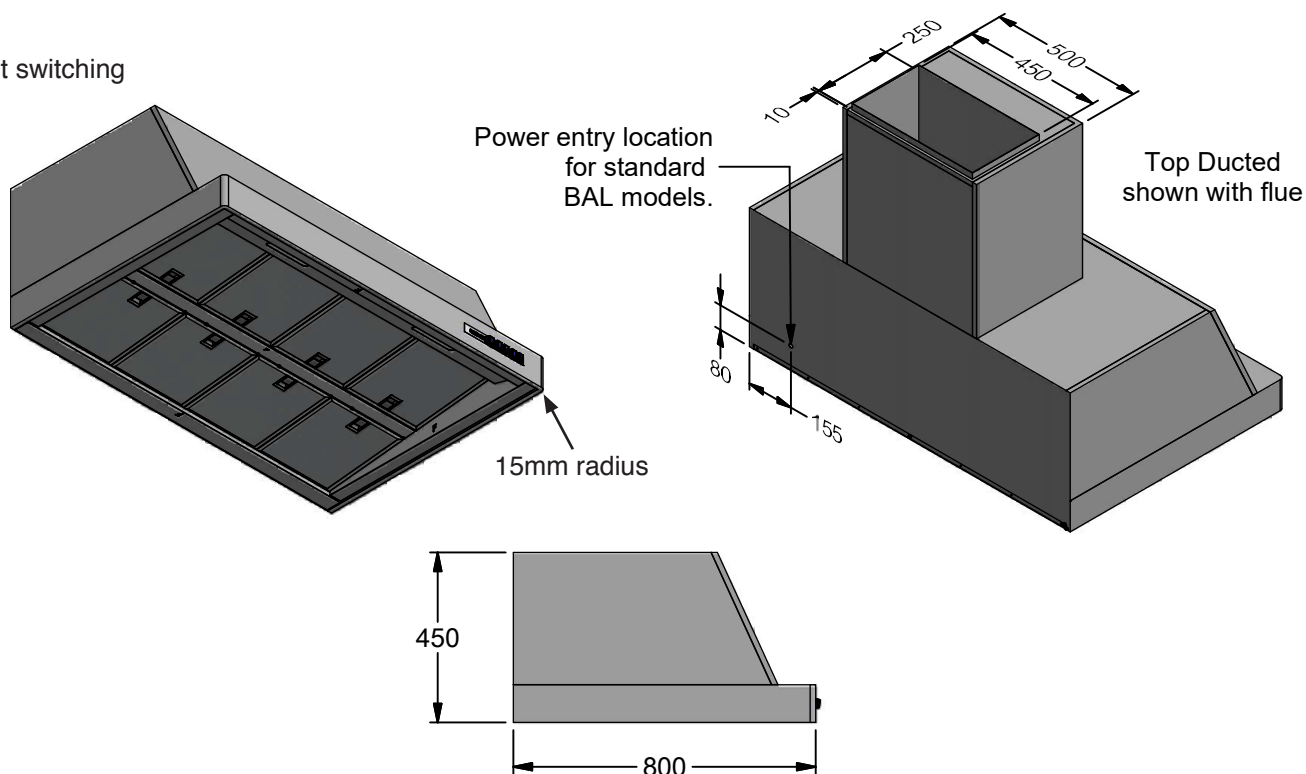
The pictures show the top and back ducted situations and the instructions explain how to reverse them if required.



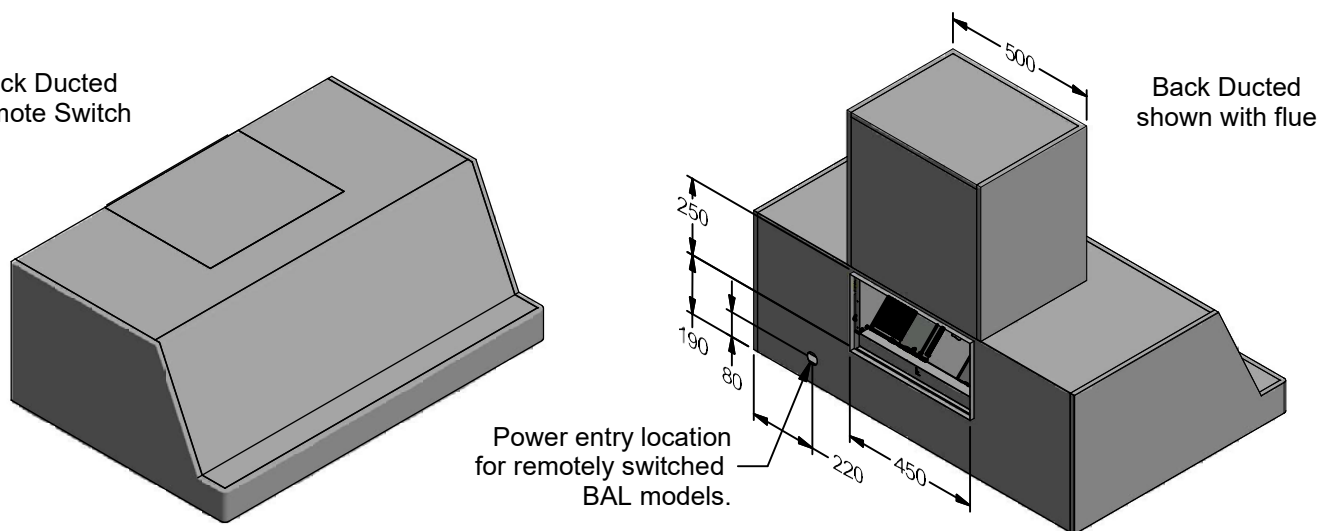
baltimore
rangehood

Baltimore Wall Mounted Technical Specifications

Front switching



Back Ducted Remote Switch



Flue options detailed on page 28.

Baltimore comes top ducted and can be converted to back ducted on site.

Model	Body Width	No. of Lights	Light Centres	No. of Filters	Filter Size
BAL 1200L-3	1200mm	2	545mm	8	272 x 290mm
BAL 1500L-3	1500mm	3	459mm	6	459 x 290mm
BAL 1200L-3R	1200mm	2	545mm	8	272 x 290mm
BAL 1500L-3R	1500mm	3	459mm	6	459 x 290mm

R - Remote switch model.

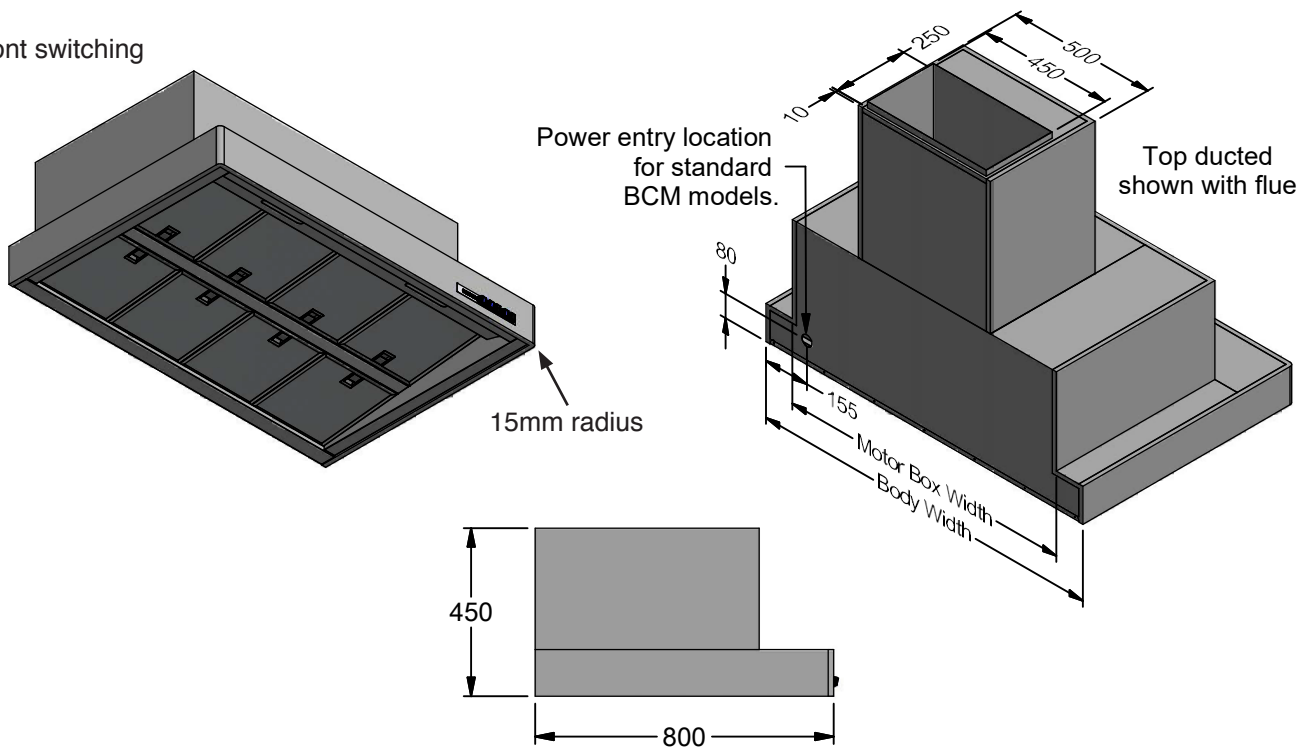
WARNING: Dimensions shown are accurate at time of printing but CONDARI reserves the right to change specifications without notice. For building purposes the unit should be provided to the cabinet maker / builder / kitchen designer for exact measurements.



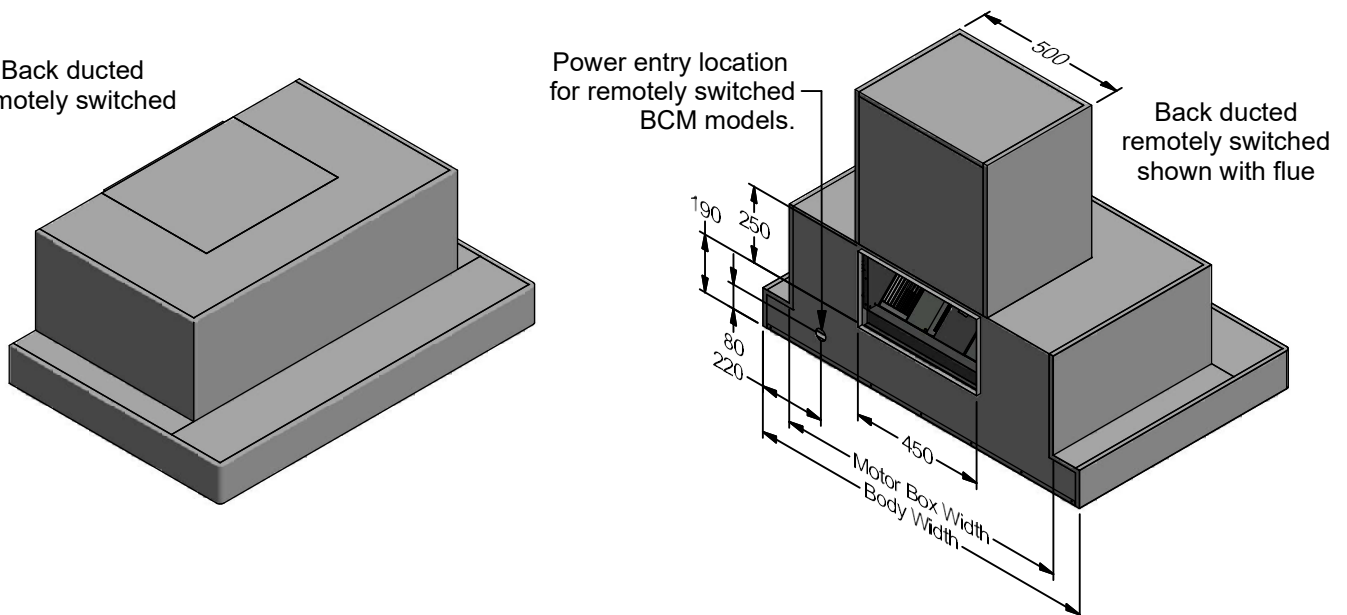
boston
rangehood

Boston Wall Mounted Technical Specifications

Front switching



Back ducted remotely switched



Flue options detailed on page 28. Shroud options page 29.

Boston comes top ducted and can be converted to back ducted on site.

Model	Body Width	Motor Box Width	No. of Lights	Light Centres	No. of Filters	Filter Size
BCM 1200L-3	1200mm	1000mm	2	545mm	8	272 x 290mm
BCM 1500L-3	1500mm	1300mm	3	459mm	6	459 x 290mm
BCM 1200L-3R	1200mm	1000mm	2	545mm	8	272 x 290mm
BCM 1500L-3R	1500mm	1300mm	3	459mm	6	459 x 290mm

R - Remote switch model.

WARNING: Dimensions shown are accurate at time of printing but CONDARI reserves the right to change specifications without notice. For building purposes the unit should be provided to the cabinet maker / builder / kitchen designer for exact measurements.

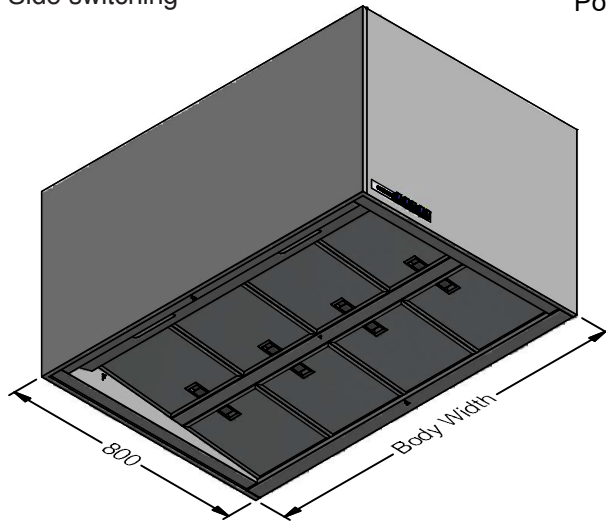


eyre
rangehood

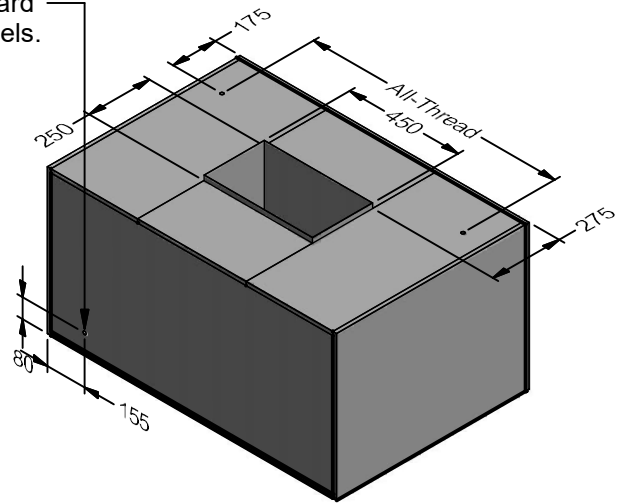
Eyre Wall Mounted Technical Specifications

Top Ducted

Side switching

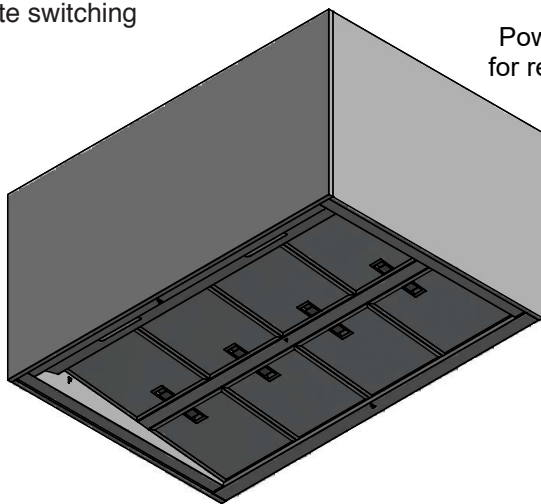


Power entry location
for standard
EYR models.

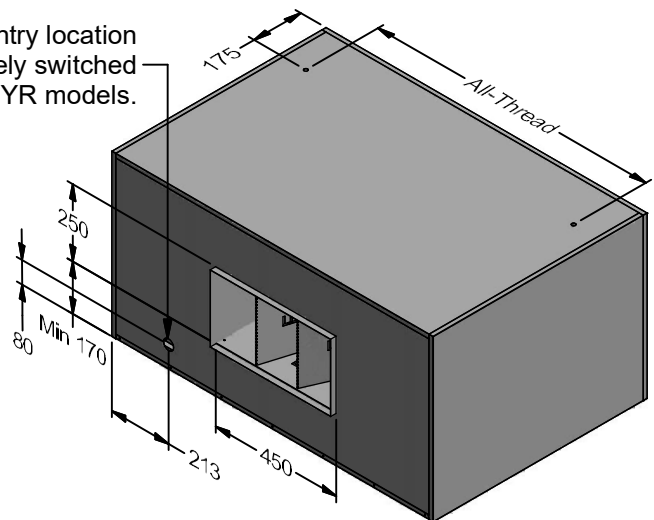


Back Ducted

Remote switching



Power entry location
for remotely switched
EYR models.



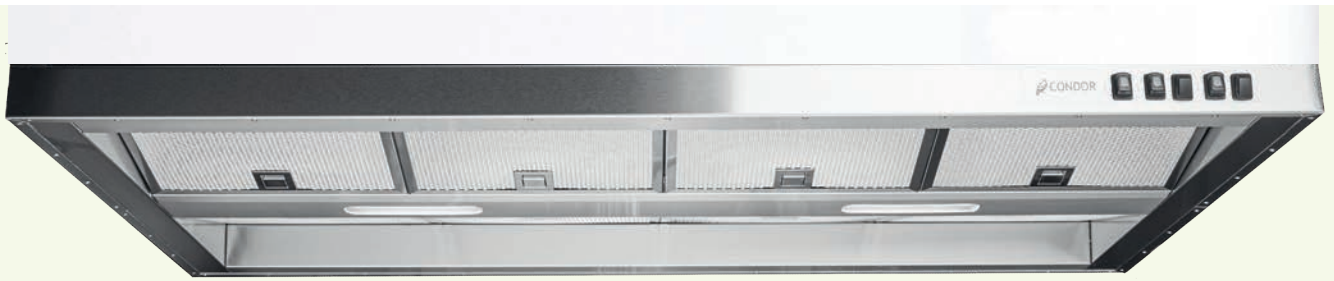
H = Height
Maximum height 1160mm
Minimum height 500mm

Eyre models are made to order as either top or back ducted.

Model	Body Width	No. of Lights	Light Centres	No. of Filters	Filter Size
EYR 1200L-3	1200mm	2	545mm	8	272 x 290mm
EYR 1500L-3	1500mm	3	459mm	6	459 x 290mm
EYR 1200L-3R	1200mm	2	545mm	8	272 x 290mm
EYR 1500L-3R	1500mm	3	459mm	6	459 x 290mm

R - Remote switch model.

WARNING: Dimensions shown are accurate at time of printing but CONDARI reserves the right to change specifications without notice.
For building purposes the unit should be provided to the cabinet maker / builder / kitchen designer for exact measurements.

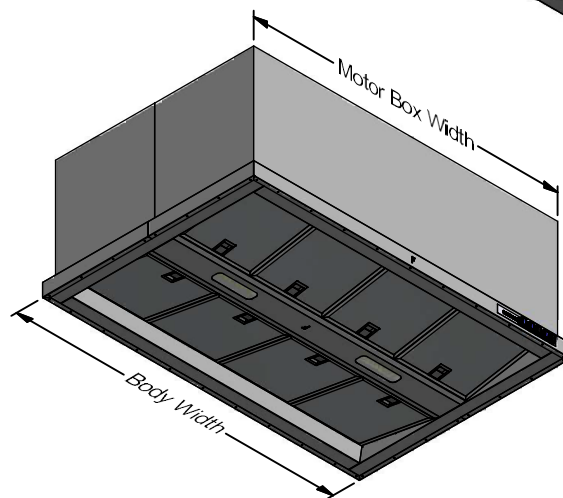
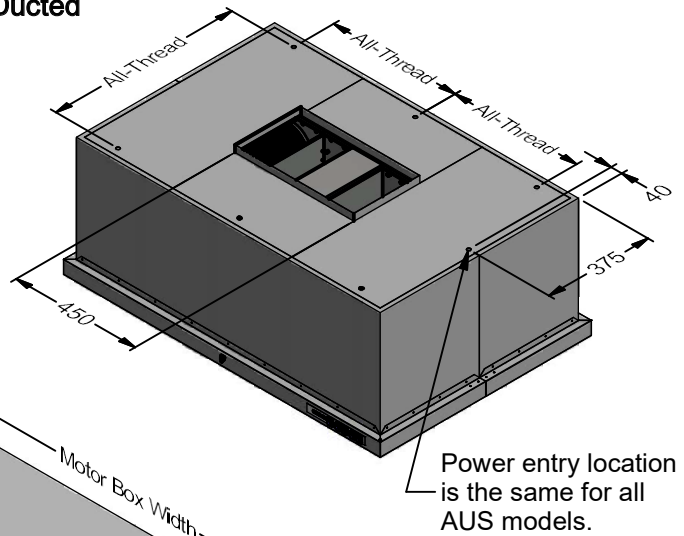
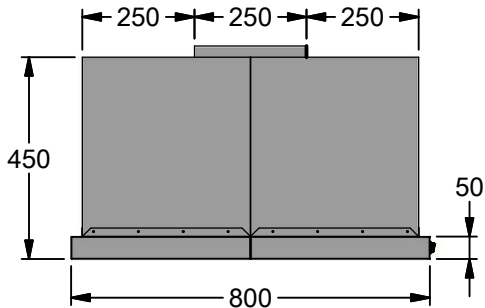


austin
rangehood

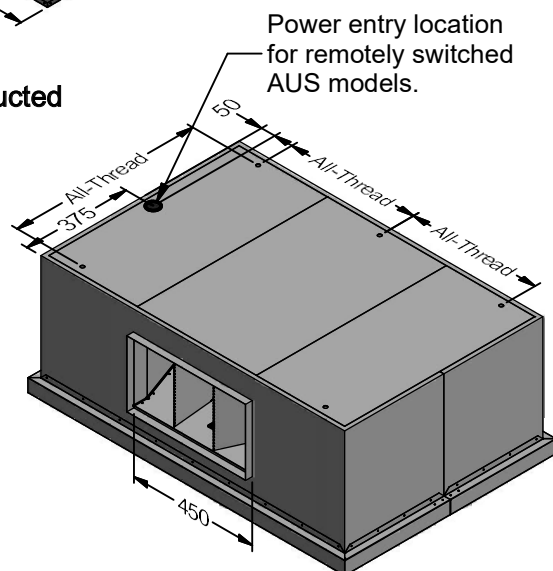
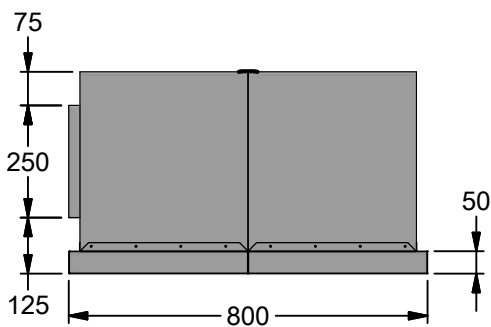
Austin Undercupboard Technical Specifications

Front switching or Remote switching

Top Ducted



Back Ducted



Austin models come either top or back ducted.

Model	Model	Body Width	No. of Lights	Light Centres	No. of Filters	Filter Size
AUS 1000L-3	AUS 1000L-3R	1000mm	2	580mm	6	290 x 290mm
AUS 1200L-3	AUS 1200L-3R	1200mm	2	545mm	8	272 x 290mm
AUS 1500L-3	AUS 1500L-3R	1500mm	3	459mm	6	459 x 290mm

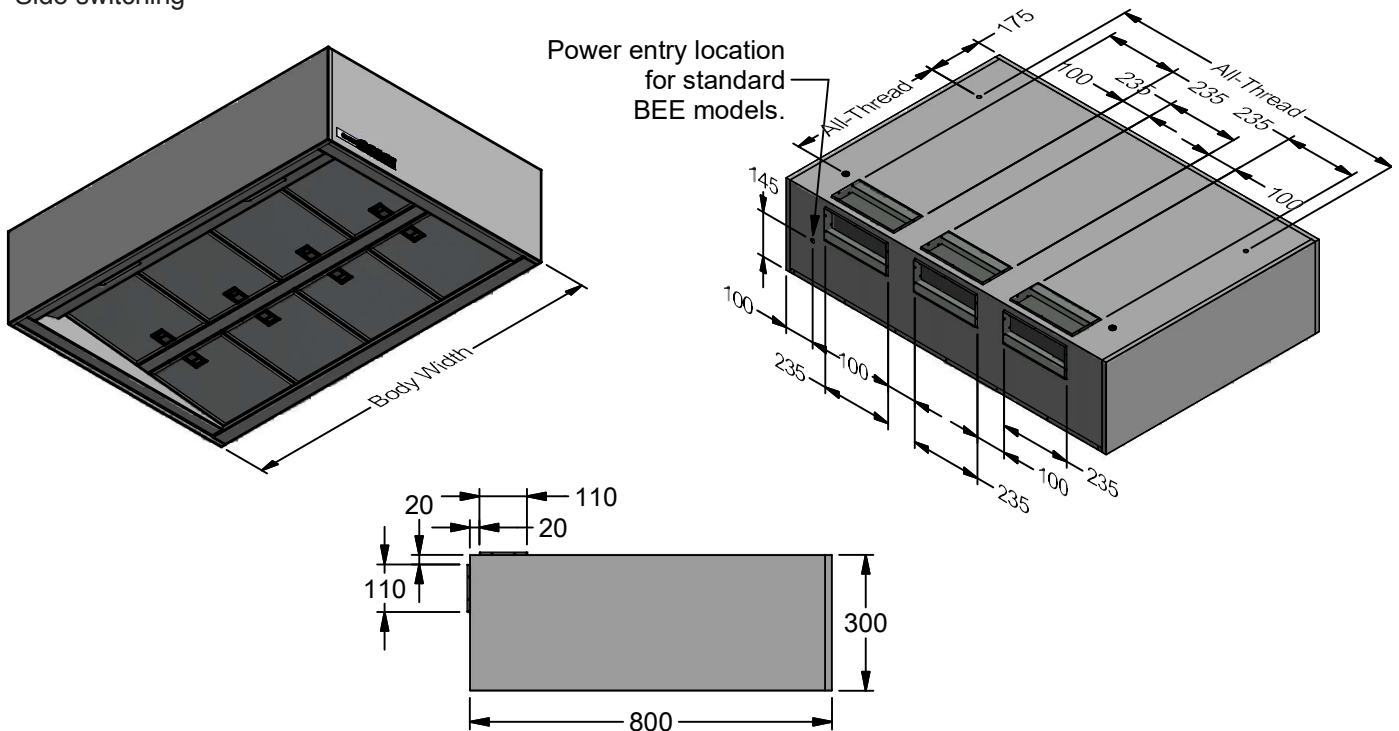
WARNING: Dimensions shown are accurate at time of printing but CONDARI reserves the right to change specifications without notice. For building purposes the unit should be provided to the cabinet maker / builder / kitchen designer for exact measurements.



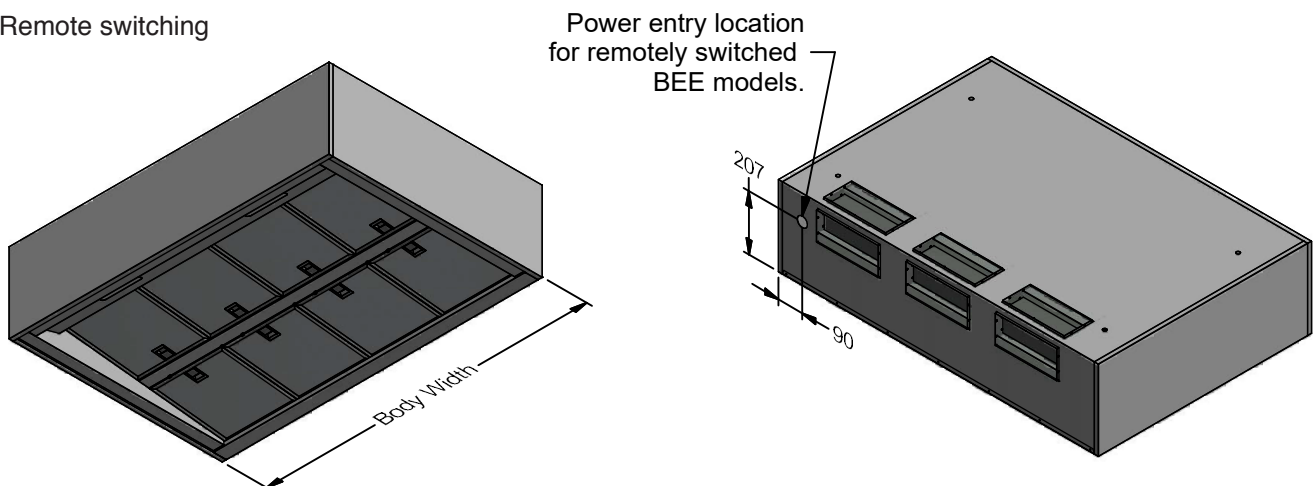
beechworth
rangehood

Beechworth Wall Mounted Technical Specifications

Side switching



Remote switching



Beechworth models require Qasair ducting.

Beechworth comes top ducted and can be converted to back ducting on site.

Model	Model	Body Width	No. of Lights	Light Centres	No. of Filters	Filter Size
BEE 1200L-3	BEE 1200L-3R	1200mm	2	545mm	8	272 x 290mm
BEE 1500L-3	BEE 1500L-3R	1500mm	3	459mm	6	459 x 290mm

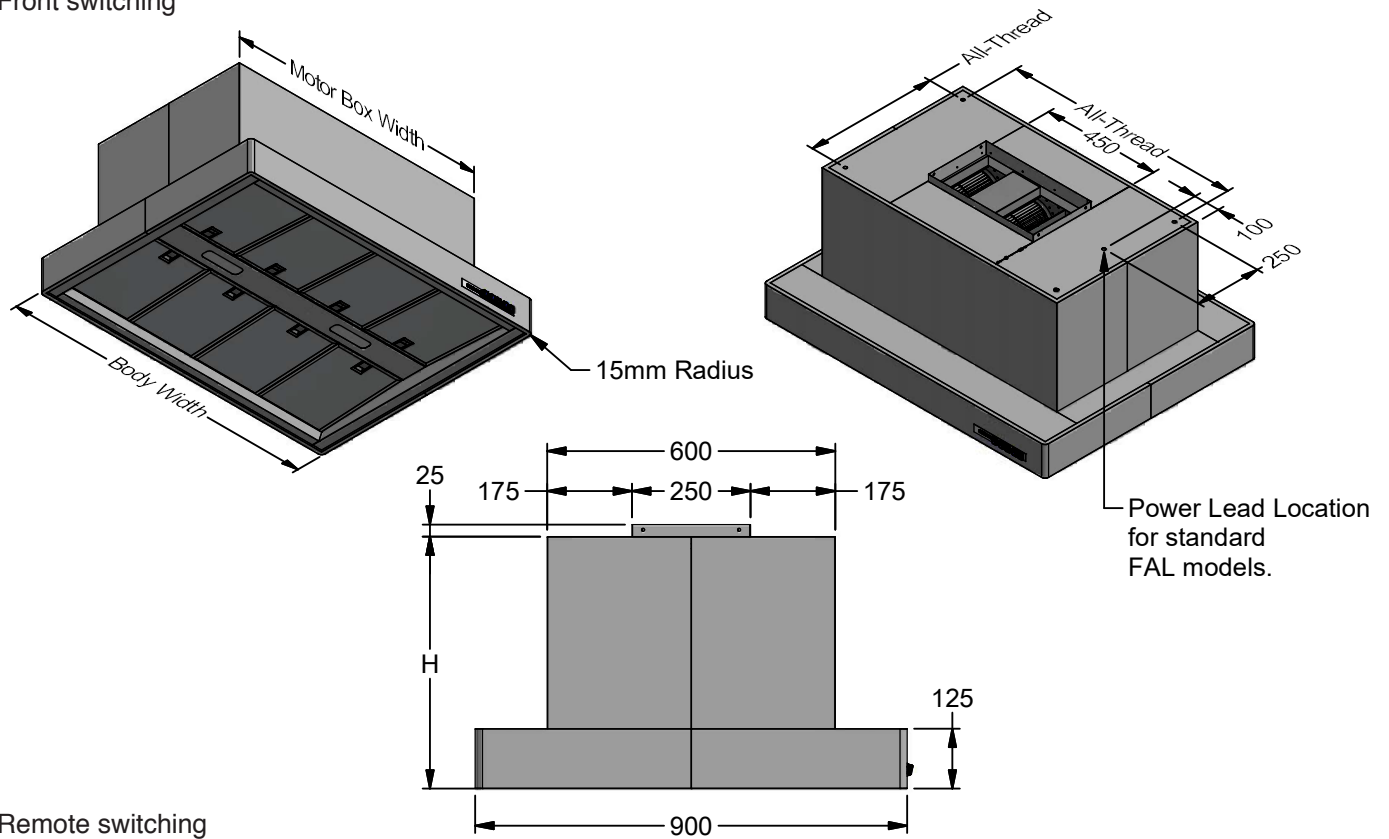
WARNING: Dimensions shown are accurate at time of printing but CONDARI reserves the right to change specifications without notice. For building purposes the unit should be provided to the cabinet maker / builder / kitchen designer for exact measurements.



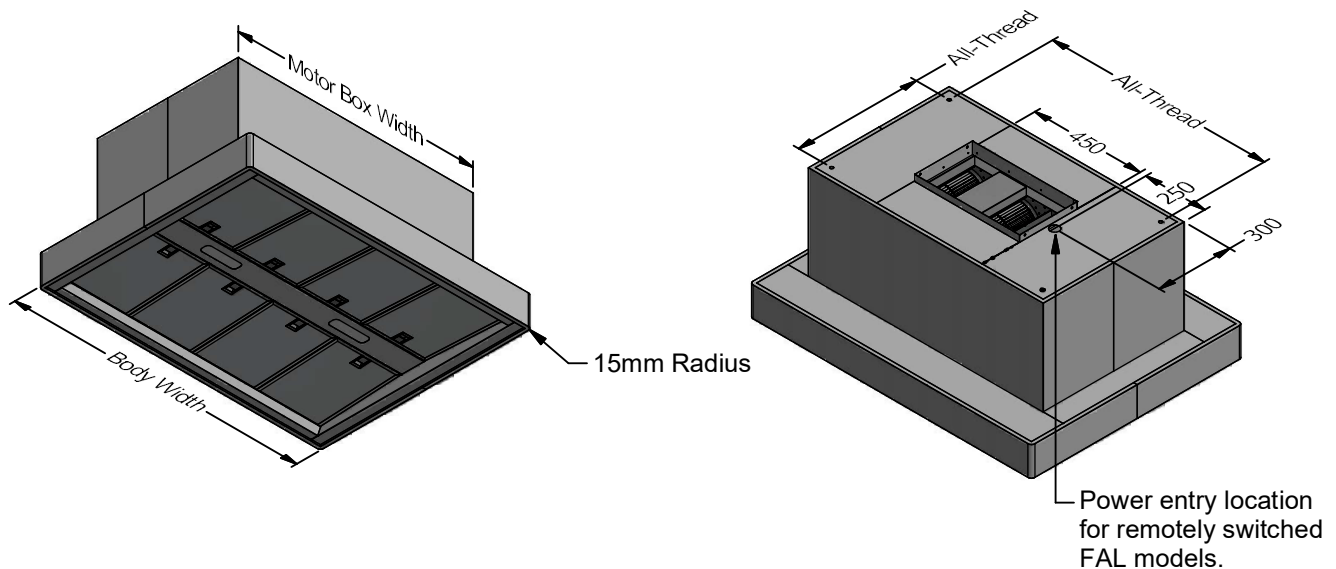
falcon
rangehood

Falcon Ceiling Mounted Technical Specifications

Front switching



Remote switching



H = Height
Maximum height 1275mm
Minimum height 480mm

Falcon models come top ducted only.

Model	Model	Body Width	Motor Box Width	Mounting Centres	No. of Lights	No. of Filters	Filter Size
FAL 1200L-3	FAL 1200L-3R	1200mm	1000mm	900mm x 500mm	2	8	272 x 355mm
FAL 1500L-3	FAL 1500L-3R	1500mm	1300mm	1200mm x 500mm	3	10	272 x 355mm

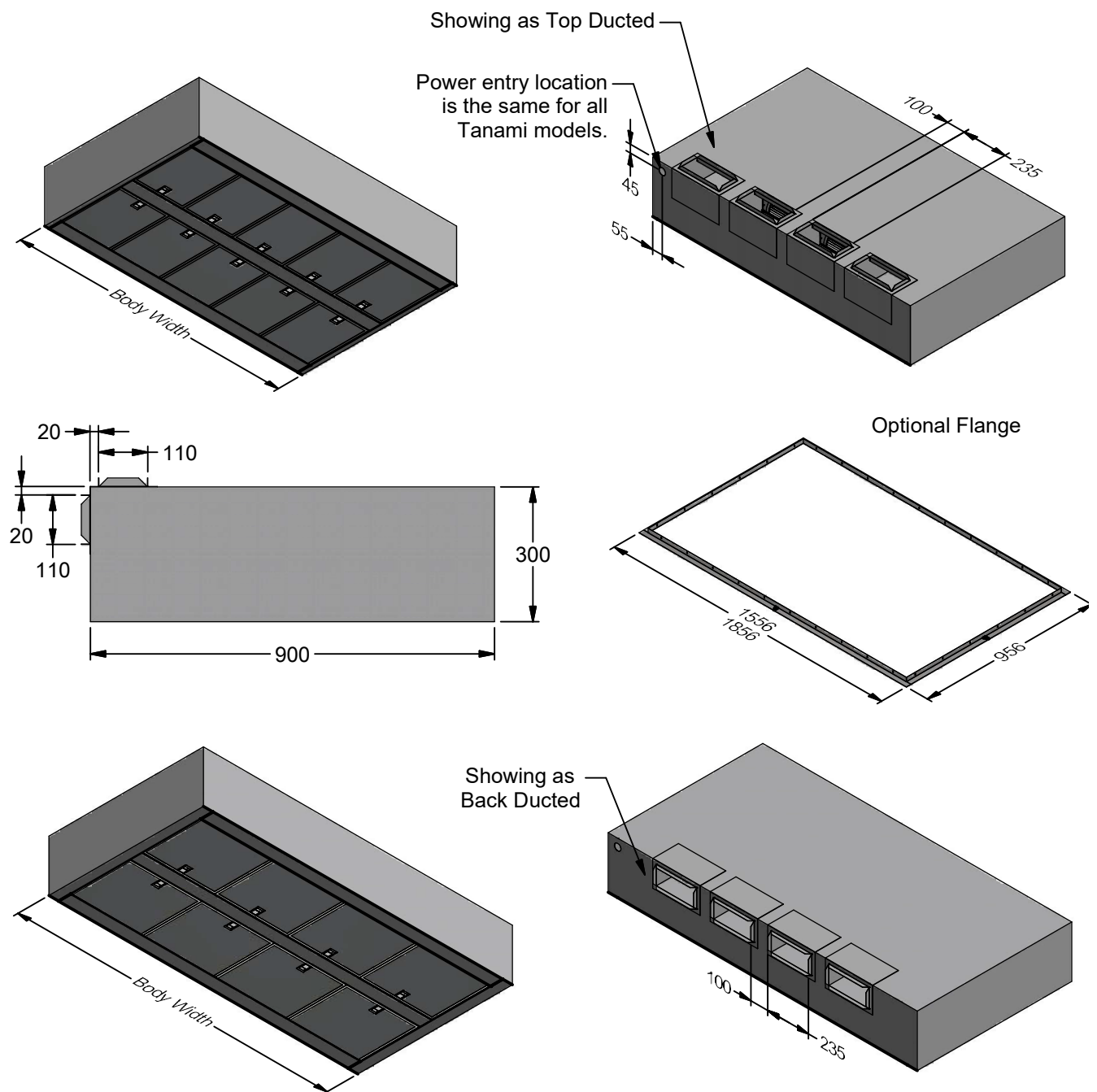
WARNING: Dimensions shown are accurate at time of printing but CONDARI reserves the right to change specifications without notice.
For building purposes the unit should be provided to the cabinet maker / builder / kitchen designer for exact measurements.



tanami
rangehood

Tanami Ceiling Mounted Technical Specifications

Remote switching only



*Tanami models require Qasair ducting.

Tanami comes top ducted and can be converted to back ducting on site.

Model	Body Width	No. of Filters	Filter Size
TAN 1500L-4	1500mm	10	290 x 355mm
TAN 1800L-4	1800mm	8	422 x 355mm

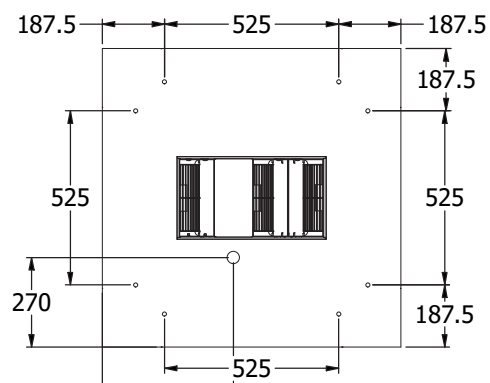
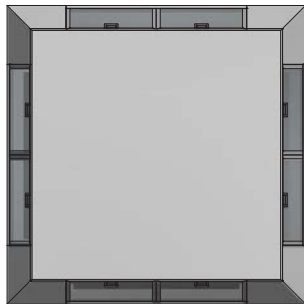
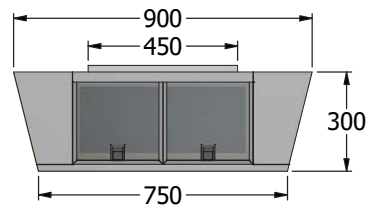
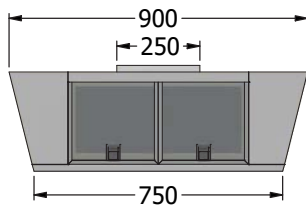
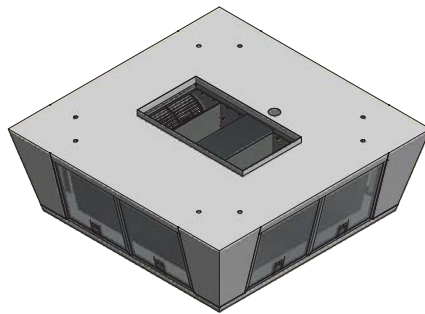
WARNING: Dimensions shown are accurate at time of printing but CONDARI reserves the right to change specifications without notice. For building purposes the unit should be provided to the cabinet maker / builder / kitchen designer for exact measurements.



peninsula
rangehood

Peninsula Ceiling Mounted Technical Specifications

Remote switching only



Model	Body Width	No. of Filters	Filter Size	Finish
PEN 900-3 SW	900mm	8	272 x 272mm	Satin White
PEN 900-3 SS	900mm	8	272 x 272mm	Stainless Steel

WARNING: Dimensions shown are accurate at time of printing but CONDARI reserves the right to change specifications without notice. For building purposes the unit should be provided to the cabinet maker / builder / kitchen designer for exact measurements.

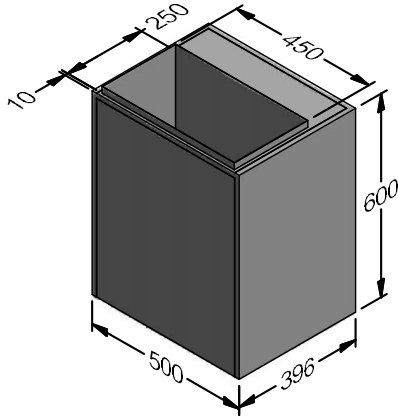


CONDOR

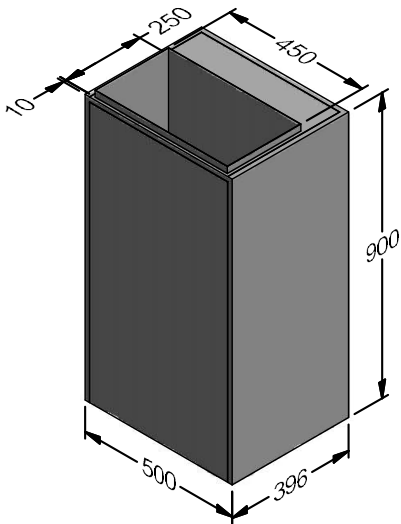
RANGEHOODS

FLUES TO SUIT BCM AND BAL MODELS

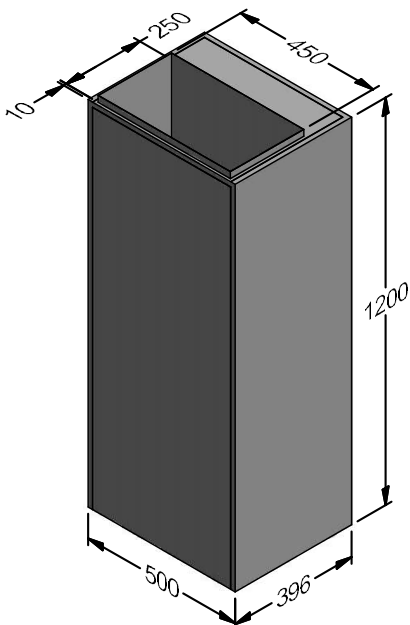
Top Ducted Flues



CFL 600 T

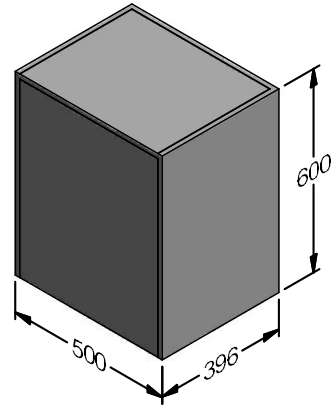


CFL 900 T

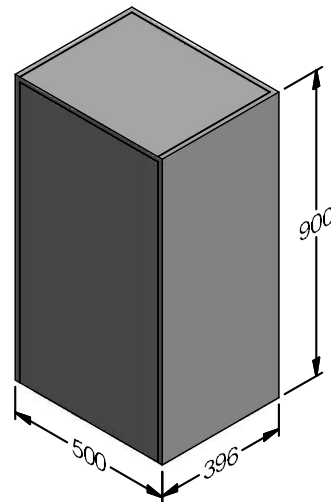


CFL 1200 T

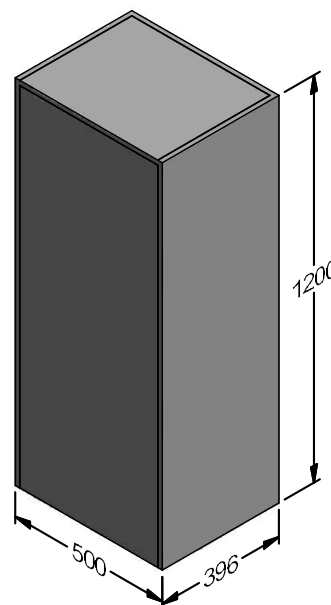
Back Ducted Flues



CFL 600 B



CFL 900 B



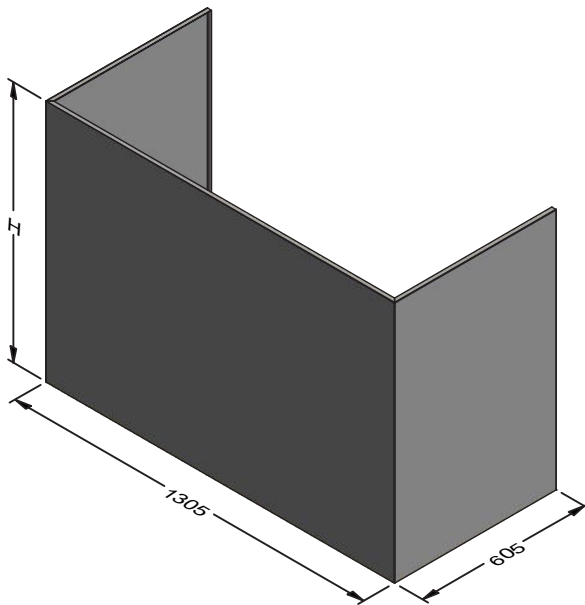
CFL 1200 B



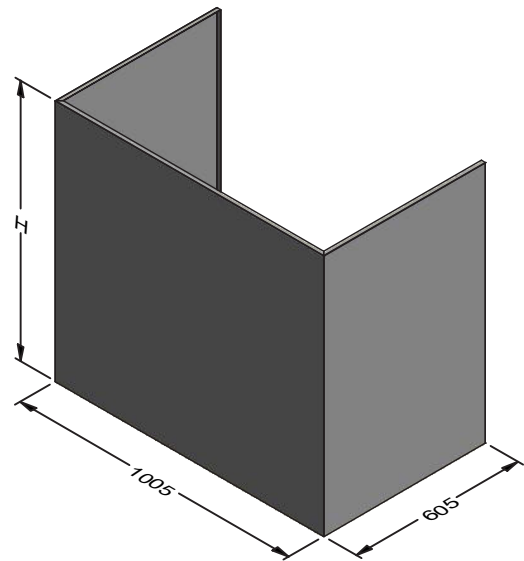
CONDOR

RANGEHOODS

Boston BCM Rangehood shroud options



BCM 1500L-3 SHROUD



BCM 1200L-3 SHROUD

H = Height

Minimum height: 325mm

Maximum height: 1450mm



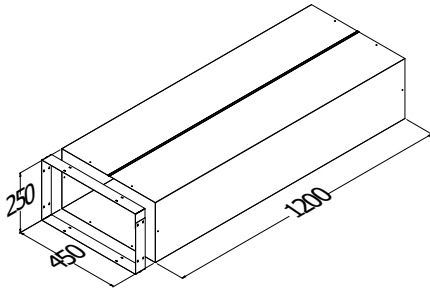
CONDOR

RANGEHOODS

DUCT PIECES

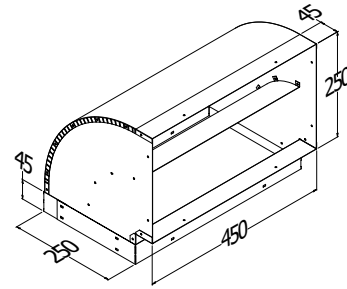
NOTE: Beechworth and Tanami models require Qasair ducting.

400. DL-4



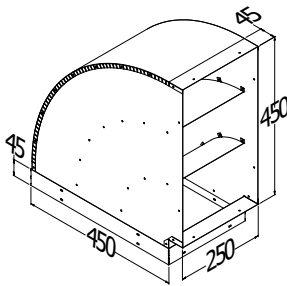
400. DL-4
400. DL-4 SS
400. DL-4 CP

401. HB 450x250



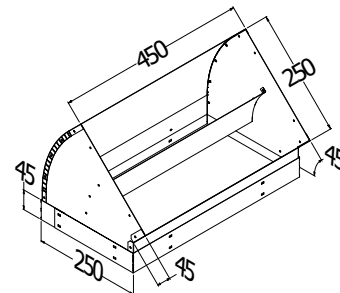
401. HB 450 x 250
401. HB 450 x 250 SS
401. HB 450 x 250 CP

402. VB 450x250



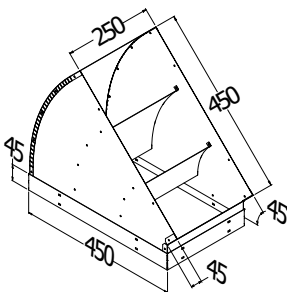
402. VB 450 x 250
402. VB 450 x 250 SS
402. VB 450 x 250 CP

403. HB 450x250/45



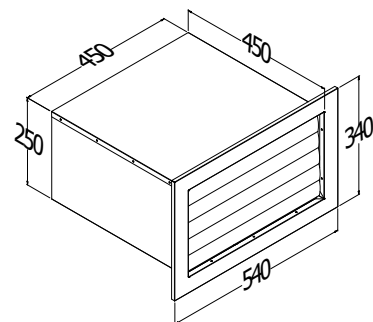
403. HB 450 x 250/45
403. HB 450 x 250/45 SS
403. HB 450 x 250/45 CP

404. VB 450x250/45



404. VB 450 x 250/45
404. VB 450 x 250/45 SS
404. VB 450 x 250/45 CP

405. BD/WV-H 450x250



405. BD/WV-H 450 x 250
405. BD/WV-H 450 x 250 SS
405. BD/WV-H 450 x 250 CP

Ventilation Systems Ducted Systems

All ducting pieces are made in Zinc Alume, Stainless Steel, Colourbond material or are powderkoted in a colour.

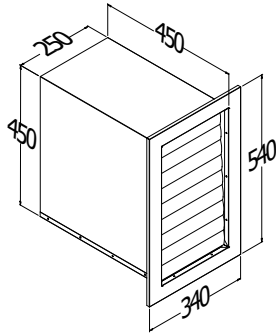


CONDOR

RANGEHOODS

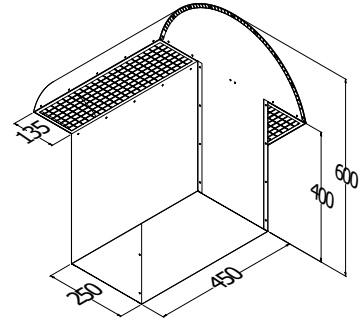
DUCT PIECES

406. BD/WV-V 450x250



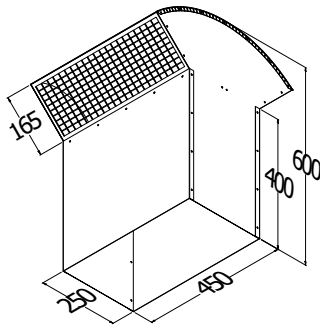
406. BD/WV-V 450 x 250
406. BD/WV-V 450 x 250 SS
406. BD/WV-V 450 x 250 CP

407. RCB



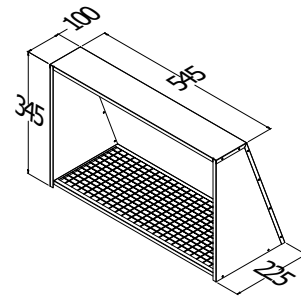
407. RCB
407. RCB SS
407. RCB CP

408. RCBA



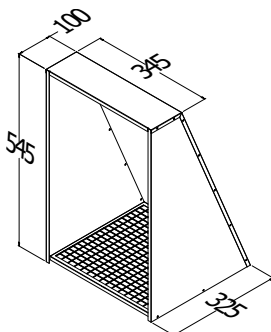
408. RCBA
408. RCBA SS
408. RCBA CP

409. WVC-H-450x250



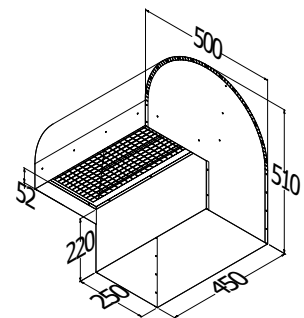
409. WVC-H-450 x 250
409. WVC-H-450 x 250 SS
409. WVC-H-450 x 250 CP

410. WVC-V-450x250



410. WVC-V-450 x 250
410. WVC-V-450 x 250 SS
410. WVC-V-450 x 250 CP

411. BD RC-4



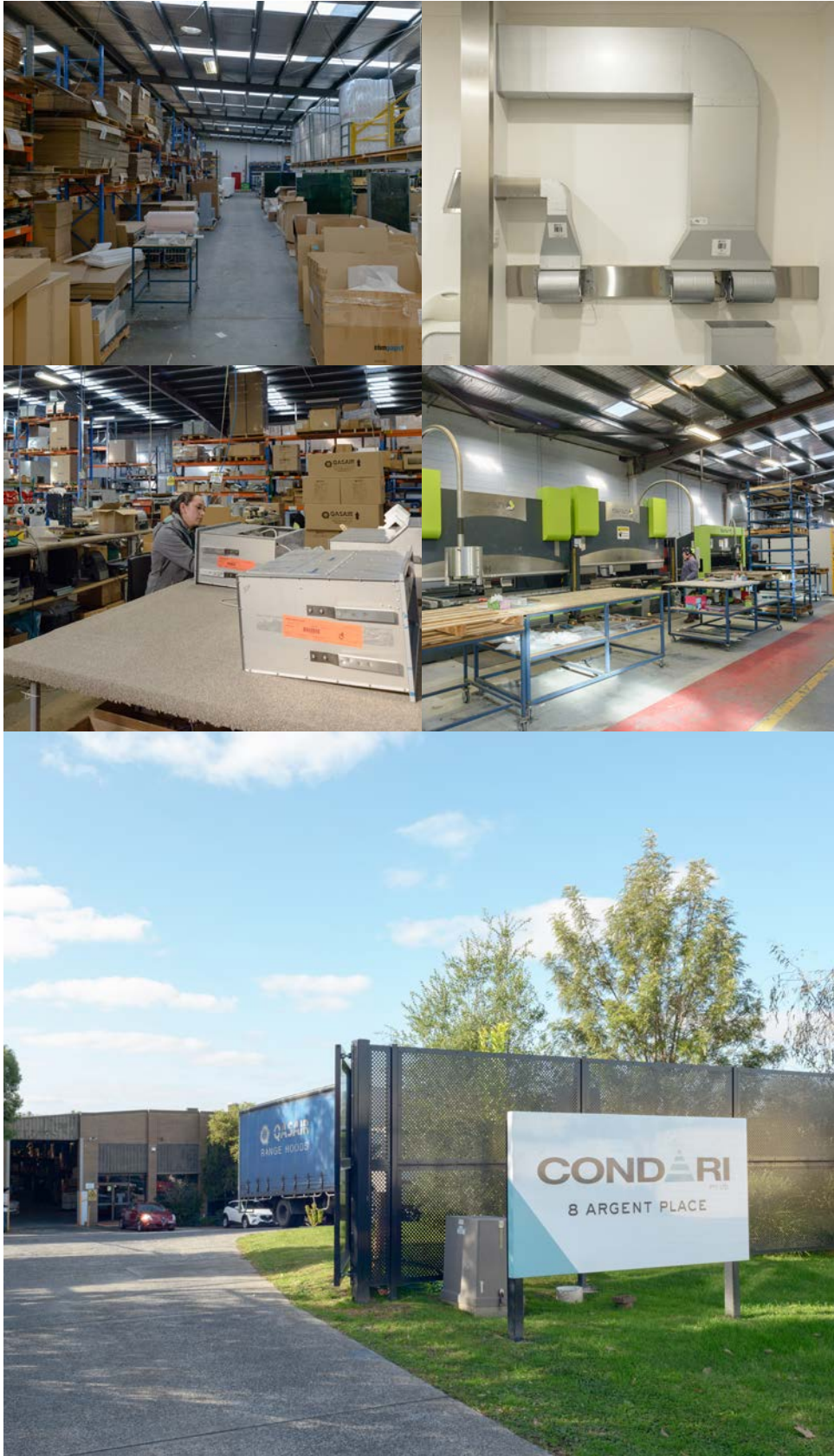
410. BD RC-4
410. BD RC-4 SS
410. BD RC-4 CP

WARNING

Dimensions shown are accurate at the time of printing but Condari reserves the right to change specifications without notice. For building purposes the unit should be provided to the cabinet maker/builder/kitchen designer for exact measurements.







Made in Ringwood 3134





Manufactured in Australia by Condari Pty Ltd
T 1300 360 563
www.condari.com.au

Head office VIC
T 03 9482 7088 F 03 9482 7011
Email: sales@qasair.com.au

NSW / ACT
T 02 9316 4599 F 02 9316 9299
Email: salesnsw@qasair.com.au

QLD
T 07 3423 3503 F 07 3282 9122
Email: salesqld@qasair.com.au

SA / NT
T 1300 360 563 F 03 9482 7011
Email: salessa@qasair.com.au

TAS
T 03 9482 7088 F 03 9482 7011
Email: sales@qasair.com.au

WA
T 08 9242 5387 F 08 9201 0887
Email: saleswa@qasair.com.au

New Zealand - Kouzina Appliances
T +64 9 377 7822 F +64 9 377 7824
Email: sales@kouzina.co.nz
www.kouzina.co.nz

Singapore - Eldric Marketing
T +65 6339 1188 F + 65 6743 0202
Email: enquiry@eldric.sg
www.eldric.sg

RANGEHOODS MADE IN RINGWOOD 3134
Condari reserves the right to change specification without notice.



www.condari.com.au