

Installation & Users Manual

CONDARI
PTY. LTD.

668-670 Smith Street, Clifton Hill Victoria 3068

Tel: +61 3 9482 7088 Fax: +61 3 9482 7011

Email: sales@qasair.com.au

Web: www.condari.com.au

Thank you for choosing a Maxmatic Waste Disposal Unit

MAXMATIC 

**Domestic Food Waste Disposal Unit Operating and
Installation Manual for 5000 / 4000 / 4000C / 3000 / 2000**

Further information and updates to these instructions are available
at **www.max-appliances.co.uk**

Please attach proof of purchase to this booklet and keep it in a safe place with the de-jam key.

Your Serial Number

Feb 2010

Contents

How to use your Maxmatic Waste Disposal Unit _____	3
General Installation Guide, Plumbing, Electrical _____	4
Installation – 5000, 4000 & 3000 _____	5
Installation Diagrams _____	7
Installation – 4000 Classic & 2000 _____	8
Installation Diagrams _____	9
If your Disposer Stops Working & Warranties _____	10

The Maxmatic Range

	Fitted with a Commercial Grinding System	Magnitop Batch Feed	Magnitube Continuous Feed	Air or Wall Switch Continuous Feed
5000	■	■	■	
4000	■		■	
4000 Classic	■			■
3000		■		
2000				■

Commercial Grinding System

From our commercial products, this tough and long lasting system grinds even the hardest food waste into finer particles than 'Shredding' machines.

Batch feed

Waste is placed in the hopper and then a Magnitop plug is used to close off access and then turned to start the unit.

Standard Continuous Feed

The unit is started either with an electrical wall switch or bench mounted air switch, waste is then fed continuously.

Magnitube Continuous Feed

The unit is started by twisting our patented Magnitube and waste is then fed through it.

- This appliance is not intended for use by persons (including children) with reduced physical, sensory or mental capabilities, or lack of experience and knowledge, unless they have been given supervision or instruction concerning use of the appliance by a person responsible for their safety.
- Children should be supervised to ensure that they DO NOT play with the appliance.
- Switch off or unplug the appliance before attempting to free a jammed motor with an implement.

How To Use Your Maxmatic

5000 & 3000

1. Remove the Magnitop plug and load the unit – DO NOT cram the waste into the unit.
2. Replace the plug in the 'DRAIN' position.
3. Turn on the COLD tap – a good flow is required.
4. Turn the Magnitop plug to the 'GRIND' position.
5. When the grinding has finished, allow the unit to run for about 10 seconds.
6. Turn the Magnitop plug to the 'DRAIN' position and turn off the water.

The 5000 is also supplied with a Magnitube and can be used as a continuous feed unit as described below for the 4000.

4000

1. Place the Magnitube in to the unit at the 'DRAIN' position.
2. Turn on the COLD tap – a good flow is required.
3. Turn the Magnitube to the 'GRIND' position and the unit will start.
4. Feed the food waste into the unit – Use a tool like our Disposal Mate to push food through the splashguard, not your fingers.
5. When the grinding has finished, allow the unit to run for about 10 seconds.
6. Turn the Magnitube to the 'DRAIN' position and turn off the water.

If you wish to dispose of larger items the Magnitube can be removed to pre load the unit.

4000 Classic & 2000

1. Remove the rubber sink plug.
2. Turn on the COLD tap – a good flow is required.
3. Turn on the unit with the air switch or wall switch.
4. Feed the food waste into the unit – Use a tool like our Disposal Mate to push food through the splashguard, not your fingers.
5. Once the waste is disposed off, allow the water and unit to run for about 10 seconds and switch off.

Instructions cont.

General

Do's

- A. Always maintain a good flow (minimum 4 litres per minute) of COLD water to carry the waste away.
- B. Break up large items to assist even distribution within the grinding chamber.
- C. Break up bones into smaller lengths to aid in speeding up their disposal.
- D. Mix the various types of waste which will help to dispose of stubborn items more speedily.

Don't

- A. Put metal, plastic, string, glass or cloth into the disposer. They will jam and damage the unit.
- B. Use heavy concentrates of detergents or bleaches in the sink housing the unit, they can damage the water seals.
- C. Use hot water it can cause grease or fat to solidify in the waste pipe, and subsequent blockages.
- D. Try to dispose of large raw bones, stringy materials or large pieces of raw fat.

Cleaning

Using plenty of water when disposing of waste and the normal passage of soapy waters will usually keep the unit clean.

General Installation Information

Plumbing

- A. The waste pipework must be installed to ensure that the unit drains completely.
- B. A 'P' or an 'S' trap must be fitted. DO NOT USE A BOTTLE TRAP.
- C. The waste MUST not discharge over a gulley or drain grating.
- D. The waste pipes should not be less than 38mm in diameter.
- E. A minimum fall of 15 degrees is recommended.
- F. The waste run should be as short as possible avoiding, sharp bends, tee connections, and stopped ends.
- G. All connections and points must not restrict the internal diameter of the pipe, check manifolds for internal baffles, as these will cause blockages.
- H. The sink must have an 89mm (3½") diameter waste hole, and must be firmly fixed to its supporting cabinet unit. Sufficient space within the cabinet is required to allow easy access to the disposal units controls.
- I. Where a lengthy, or meandering run of pipe work is unavoidable, it is recommended that the pipe size be increased to 54mm (2") diameter immediately after the trap.
- J. Make sure that the installation of the appliance is allowed by the authorities.

Electrical: WARNING – The unit must be earthed

- A. The appliance must be installed in accordance with I.E.E regulations.
- B. The supply must be of the correct voltage and frequency.
- C. The current rating of the BS 1362 fuse to be used on this unit is 13A and only AIA approved fuses are to be used.
- D. The unit must be connected to the supply by means of a non-detachable flexible cord.
- E. Means for disconnection must be incorporated in the fixed wiring in accordance with the wiring rules, ideally, via a 13amp double pole switched spur.
- F. If the supply cord is damaged a replacement should be obtained from the manufacturer. The cord must then be replaced by the manufacturer, its service agent or similarly qualified persons in order to avoid a hazard.
- G. When installing the unit, care must be taken that the overload reset button and Reverse Switch (where fitted) are readily accessible.
- H. The wires in the mains lead are coloured in accordance with the following code

GREEN AND YELLOW – EARTH

BLUE – NEUTRAL

BROWN – LIVE

Installation – 5000, 4000 & 3000

Step 1: Fitting the sink bush assembly (See Fig.1 – Stage 1)

- 1.1 Remove the sink bush assembly from the unit by first loosening the three-nuts (9), and twisting the assembly clockwise in the hopper flange keyholes.
- 1.2 Slacken off the three-grub screws (7) sufficiently to push the Suspension Plate (5) up the Sink Bush (1) to enable you to remove the circlip (5) by twisting a flat bladed screwdriver underneath the clip at it's joint from the side, slide off all the components from the sink bush, with the exception of the Inlet Gasket (2).
- 1.3 Position the sink bush in the sink waste outlet hole so that the line with the arrowhead and the word GRIND is positioned at 9 o'clock relative to the front of the sink unit. Check that it is flush or below the sink bowl surface and that it has a good seating. If not, remove the inlet gasket and substitute with a layer of plumbers putty or suitable sealant.
- 1.4 From the underside of the sink, position the lower waste inlet gasket (3), followed by the clamp plate (4') (with the outer edge is turned downwards). Push the suspension plate up onto the sink bush as far up as you can, to reveal the groove around the sink bush that holds the circlip and then push the circlip up the sink bush until it snaps into the groove.
- 1.5 You may now release the suspension plate and allow it to rest on the circlip and then rotate it until the slot (see Fig.5) in the edge of the plates upper rim is in line with the pimple on the sink bush. Tighten up the grub screws by hand a few turns to each in rotation so that the suspension plate remains parallel to the clamp plate. see Fig 4. Finally, tighten with a screwdriver DO NOT over-tighten the grub screws, as this will cause distortion of the Suspension Plate.

Instructions cont.

Step 2: Fitting the unit to the sink bush assembly (Fig.1 – Stage 2)

- 2.1 Fit the Hopper Seal (8) on to the three grub screws flatest side up, the bottom edge of the sink bush will locate in the recess on the top of the seal.
- 2.2 Fit the three nuts and washers, to the grub screws only a few turns.
- 2.3 Offer up the disposer with the control box facing towards you ensuring that the nuts and washers fit through the large holes of the keyholes and turn the disposer clockwise, so that the grub screws move into the keyhole slots and rest the disposer on the washers above the nuts.
- 2.4 Tighten up the three nuts evenly ensuring that the hopper seal is correctly seated. DO NOT over-tighten the nuts as this will cause the hopper seal edge to bulge into the waste inlet, which will hamper the movement of the Magnitop Plug. Over-tightening may also cause the hopper to distort resulting in a leak.

Step 3: The disposer is now ready for the waste plumbing and electrical connections

- 3.1 If required the bottom half of the disposer with the waste outlet can be rotated to make the plumbing easier. To do this slightly slacken off ALL six bolts around the underside rim of the hopper (if one is not slackened the hopper seals may be twisted out of position and the cutter ring could be misaligned). Gently rotate the lower section of the unit to the required position and tighten the six bolts (see Fig.2).
- 3.2 Connect to the drain and electrical supply by following the general instructions on page 4.

Step 4: Testing

- 4.1 Insert the Magnitop Plug into the sink outlet and turn to the 'SEAL' position and half fill the sink with water and check for leaks around the underside of the sink (The 4000 model does not include a Magnitop plug so the stainless steel plug supplied is used). Turn the Magnitop plug to the 'DRAIN' position and check all joints for leaks.
- 4.2 Set the switch on the front of the control of the unit to the 'ON' position (Fig.3) Please note that the switch is not used to activate the machine and is merely supplied as a means of reversing cutting rotation. Check the power and test the operation of the unit by following the instructions on page 3.
- 4.3 Attach proof of purchase to this booklet and keep it in a safe place with the de-jam key. Don't forget to return the registration card within 14 days together with a copy of your proof of purchase to extend your warranty.

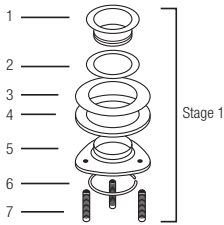
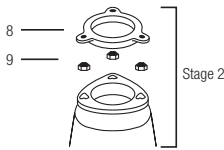


Figure 1



Loosen all the six screws to enable the lower section of the appliance to rotate

When position has been set evenly retighten screws

Figure 2

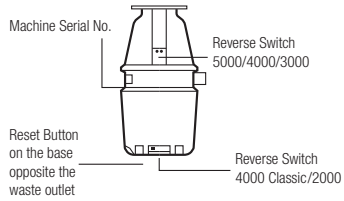


Figure 3

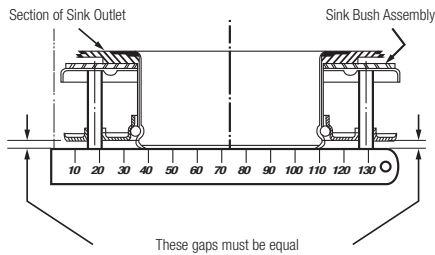


Figure 4

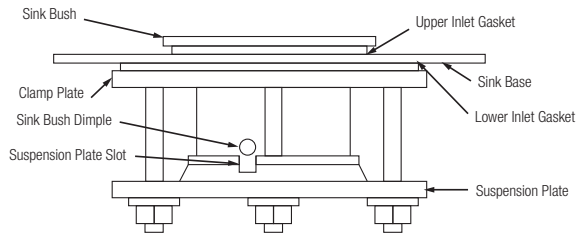


Figure 5

Instructions cont.

Installation – 4000 Classic & 2000

Step 1: Fitting the sink bush assembly (See Fig.1 – Stage 1)

- 1.1 Remove the sink bush assembly from the unit by first loosening the three-nuts (9'), and twisting the assembly clockwise in the hopper flange keyholes.
- 1.2 Slacken off the three-grub screws (7) sufficiently to push the Suspension Plate (5) up the Sink Bush (1) to enable you to remove the circlip (6) by twisting a flat bladed screwdriver underneath the clip at it's joint from the side, slide off all the components from the sink bush, with the exception of the Inlet Gasket (2).
- 1.3 Position the sink bush in the sink waste outlet hole so that the MAXMATIC engraving is at the front of the sink. Check that it is flush or below the sink bowl surface and that it has a good seating. If not, remove the inlet gasket and substitute with a layer of plumbers putty or suitable sealant.
- 1.4 From the underside of the sink, position the lower waste inlet gasket (3), followed by the clamp plate (4) (with the outer edge is turned downwards). Push the suspension plate up also onto the sink bush as far up as you can, to reveal the groove around the sink bush that holds the circlip and then push the circlip up the sink bush until it snaps into the groove.
- 1.5 You may now release the suspension plate and allow it to rest on the circlip and then rotate it until you have 1 grub screw at the back and 2 at the front. Tighten up the grub screws by hand a few turns to each in rotation so that the suspension plate remains parallel to the clamp plate. see Fig 4. Finally, tighten with a screwdriver DO NOT overtighten the grub screws, as this will cause distortion of the Suspension Plate.

Step 2: Fitting the unit to the sink bush assembly (Fig.1 – Stage 2)

- 2.1 Fit the Hopper Seal (8) on to the three grub screws flatest side up, the bottom edge of the sink bush will locate in the recess on the top of the seal.
- 2.2 Fit the three nuts and washers, to the grub screws only a few turns.
- 2.3 Offer up the disposer with the control box facing towards you ensuring that the nuts and washers fit through the large holes of the keyholes, and turn the disposer clockwise, so that the grub screws move fully into the keyhole slots and rest the disposer on the washers above the nuts.
- 2.4 Tighten up the three nuts evenly ensuring that the hopper seal is correctly seated. DO NOT over-tighten nuts, as this will cause the hopper to distort resulting in a leak.

Step 3: The disposer is now ready for the waste plumbing and electrical connections

- 3.1 If required the bottom half of the disposer with the waste outlet can be rotated to make the plumbing easier. To do this slightly slacken off ALL six bolts around the underside rim of the hopper (if one is not slackened the hopper seals may be twisted out of position and the cutter ring could be misaligned). Gently rotate the lower section of the unit to the required position and tighten the six bolts (see Fig.2).
- 3.2 Connect to the drain and electrical supply by following the general instructions on page 4.

Step 4: Testing

- 4.1 Insert the plug into the sink outlet and half fill the sink with water and check for leaks around the underside of the sink. Remove the plug and check all joints for leaks.
- 4.2 Set the switch on the front of the control of the unit to the 'ON' position (Fig.3) Please note that the switch is not used to activate the machine and is merely supplied as a means of reversing cutting rotation. Check the power and test the operation of the unit by following the instructions on page 3.
- 4.3 Attach proof of purchase to this booklet and keep it in a safe place with the de-jam key. Don't forget to return the registration card within 14 days together with a copy of your proof of purchase to extend your warranty.

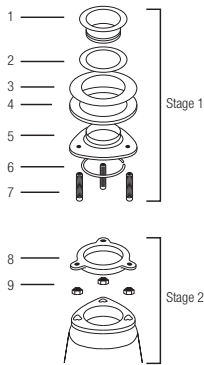


Figure 1



Loosen all the six screws to enable the lower section of the appliance to rotate

When position has been set evenly retighten screws

Figure 2

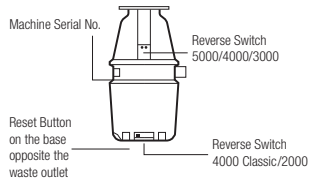


Figure 3

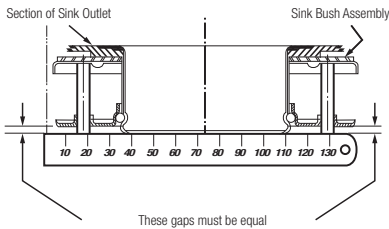


Figure 4

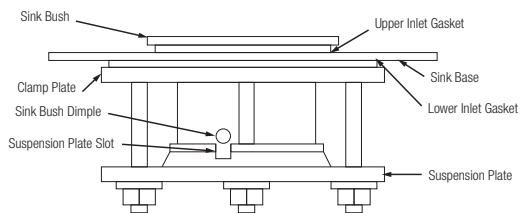


Figure 5

Instructions cont.

If Your Disposer Stops Working

An overload switch protects your Maxmatic disposer. This will turn off the power in the event of a jam, overloading, or if the unit is left running for a prolonged period.

1. First turn off the power supply.

2. If your unit has a reverse switch, select the centre 'OFF' position.
3. Allow the unit to cool for a few minutes.
4. You will find the RED reset button on the BOTTOM of the unit, press it with your finger.
5. Select either 'ON' position on the reverse switch if your unit has one.

6. Restore the power supply.

7. Try the unit.

If this fails

8. Repeat Steps 1 to 3 above.
9. Insert the DE-JAM key supplied with your unit and turn in both directions until it rotates freely.
10. Remove the DE-JAM Key.
11. Repeat Steps 4 to 7 above.

If this fails

12. Check that your power supply is not fused and that your air switch or wall switch is working.
13. Contact Condari P/L on 1300 360 563.

Warranty

Providing our installation and operating instructions have been carefully observed, this waste disposer is guaranteed to the REGISTERED original purchaser, to be free from defects in material and workmanship for the periods specified below.

Standard model	Labour	Parts
3000	2 Years	2 Years
2000	2 Years	2 Years

Deluxe model	Labour	Parts
5000	2 years	10 years Replacement / service exchange
4000	2 years	10 years Replacement / service exchange
4000 Classic	2 years	10 years Replacement / service exchange

This guarantee does not apply to any detachable items (rubber plug, splashguard, Magnitube or Magnitop plug), and any costs incurred in the rectification of either faulty installation or jammed machines. Furthermore this guarantee does not apply where a machine has been abused in circumstances in which we would normally consider a commercial machine applicable (e.g. establishments providing more than 10 meals per sitting or on a continuous or semi-continuous sitting).

For service contact the service department who will advise you of your nearest service agent.

You will be asked to quote the serial number to identify your machine and check registration.

It is our policy to continually improve our products and we reserve the right to implement design changes at any time without prior notice.

Condari P/L Appliance Guarantee

The benefits conferred by this warranty are in addition to all other rights and remedies in respect of the product which the consumer has under the Trade Practices Act and similar state and territory laws.

Condari P/L in Melbourne (and by their agency in Country Areas and other States) warrants that the appliance will be free from defects in materials and workmanship for a period of 24 months from the date of delivery of the appliance to the consumer.

If there is a breach of this warranty, Condari will rectify, free of charge, at its nearest service centre or authorised service agency any fault caused by faulty workmanship or material at the time of manufacture occurring in the appliance within 36 months from the date of delivery of the appliance to the customer.

This warranty is conditional upon the appliance being used only for personal, domestic and household purposes and installed and operated in accordance with Condari P/L instructions and does not apply to articles which by their nature are consumable.

If a defect is caused by neglect, misuse, or failure to follow operating instructions where special precautions are detailed for user attention then a charge shall be made for the service call.

CONDARI
PTY LTD

Standard Warranty

Date installed _____

Purchased from _____

Model _____

Serial number _____

The purchaser must fill in the above information and keep this with the original purchase document. This form must be produced if and when a claim is made under this warranty.

Tel: +61 3 9482 7088 Fax: +61 3 9482 7011



Distributed in Australia by Condari Pty Ltd
 668-670 Smith Street, Clifton Hill Victoria 3068
 Tel: +61 3 9482 7088 Fax: +61 3 9482 7011
 Email: sales@qasair.com.au
 Web: www.condari.com.au

Your Distributors

Australia

NSW	Tel: +61 2 9316 4599	Fax: +61 2 9316 9299
QLD	Tel: 0408 833 321	Fax: +61 7 3282 9122
WA	Tel: +61 8 9381 1188	Fax: +61 8 9381 6000
SA	Tel: 0419 109 256	Fax: +61 8 8449 6973
ACT	Tel: +61 2 6239 2877	Fax: +61 2 6239 2750
TAS	Tel: +61 3 6231 6633	Fax: +61 3 6231 6662
NT	Tel: +61 8 8947 3444	Fax: +61 8 8947 0419

New Zealand

Kitchen Appliance Specialist Ltd
 320 Manchester Street
 Christchurch New Zealand
 Tel: +64 3 379 0360 Fax: +64 3 365 5623

Singapore

Eldric Marketing Pte Ltd
 5 Pereira Road
 #02-01 Asiawide Industrial Building
 Singapore 368025
 Tel: +65 6743 8388 Fax: +65 6743 0202

Eldric Marketing Pte Ltd
 176 Orchard Road
 #05-03 Centrepoint
 Singapore 238843
 Tel: +65 6339 1168 Fax: +65 6733 8133